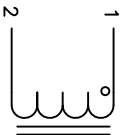


The information contained in this drawing is the sole property of CWS Coil Winding Specialist. Any reproduction in part or whole without written permission of CWS Coil Winding Specialist is prohibited.



SCHEMATIC

7 BUILD TO RoHS COMPLIANCE

6 LABEL PART NUMBER AND REVISION AND DATE CODE

POSITION LEADS AS REQUIRED  
REMOVE WIRE INSULATION AND TIN  
WIND COILS EVENLY SPACED  
CONSTRUCTION:

4 WEIGHT: 7.0 GRAMS  
HI-POT WINDING-TO-CORE 1250 VAC, 10 SEC  
INTERWINDING CAPACITANCE: 49 pF  
DCR=330 MILLI-OHM MAX

3 |Z| @ SFR = 23 K-OHM TYPICAL  
SFR = 880 KHZ TYPICAL  
MAX TEMP. RISE @ DC: 1 AMP, LESS THAN 50°C  
INDUCTANCE @ 0 AMP = 680 uH +/- 15%  
TEST FREQUENCY 10 KHZ TEST VOLTAGE: 250 mV  
INDUCTOR RATED MAX. CURRENT=1 AMP RMS  
OPERATING TEMPERATURE RANGE: -40°C TO 85°C  
SPECIFICATIONS @ 25°C:

2 WIRE: UL RECOGNIZED 155°C RATED MAGNET WIRE  
CORE: IRON POWDERED CORE

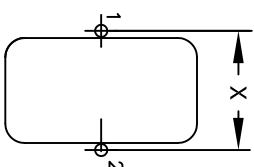
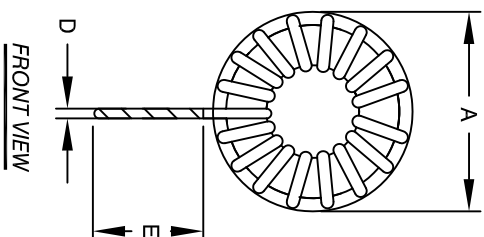
1 RATING UL-CLASS ( 155°C ) REQUIRED  
MATERIAL: UL RECOGNIZED

NOTES: TOROIDAL POWER CHOKE. ALL DIMENSIONS IN INCHES

DIMENSIONAL TOLERANCE						
A	B	C	D	E	X	
MAX	MAX	MIN	TYP	TYP	REF	
0.73 [18.52]	0.43 [10.87]	0.50 [12.70]	.018 [0.46]	0.46 [11.68]	0.36 [9.10]	

REVISION HISTORY			
REV	ECN	DESCRIPTION	
A		PRODUCTION RELEASE	

DC Bias Inductance			
(A)	(uH)		
0	678		
1	355		



MOUNTING HOLES PATTERN  
(VERTICAL)

PARTS LIST			
AUTOCAD		X	
SOLIDWORKS		DATE	
SIGN		DATE	
DRAWN		DATE	
CHECKED		DATE	
ENGR.		DATE	
APPR.		DATE	
DO NOT SCALE DRAWING		SCALE	
UNLESS OTHERWISE SPECIFIED		TITLE:	
DIMENSIONING AND TOLERANCE PER ANSI Y14.5M		CWS Coil Winding Specialist.	
ALL DIMENSIONS ARE IN INCHES AND [MILLIMETERS]		353 WEST GROVE	
TOLERANCE INCHES:		ORANGE, CA 92865	
TOLERANCE METRICS:		Power Inductor	
TOLERANCE METRICS:		680 uH, 1 Amp Vertical	
TOLERANCE METRICS:		CWS-1TC-12747	
TOLERANCE METRICS:		REV A	